



ZAPATA APARTMENTS

Rental Information



*For more information visit
www.bickerdike.org or scan the QR Code.
 You can also call Bickerdike Apartments
 at 773.227.6332
 Monday - Tuesday, Thursday - Friday
 9:00 a.m. - 5:00 p.m.*

Zapata Apartments consist of 61 residential units in four buildings on or near the Armitage Avenue corridor in Chicago's Logan Square community. The 3734 W. Cortland site includes a tot lot. Zapata Apartments is a "green," environmentally-friendly, energy efficient development featuring Energy Star rated appliances and energy efficiency upgrades to insulation, windows, lighting, and heating and cooling systems, as well as other "green" elements.

LOCATIONS

- 1955 N. St Louis
- 3230 W. Armitage
- 3503 W. Armitage
- 3734 W. Cortland

RENT LEVELS

1 Bedroom	\$1,035
2 Bedrooms	\$1,255
3 Bedrooms	\$1,450

MINIMUM ANNUAL INCOME

\$31,050
\$37,650
\$43,500

SECTION 8 VOUCHERS ACCEPTED

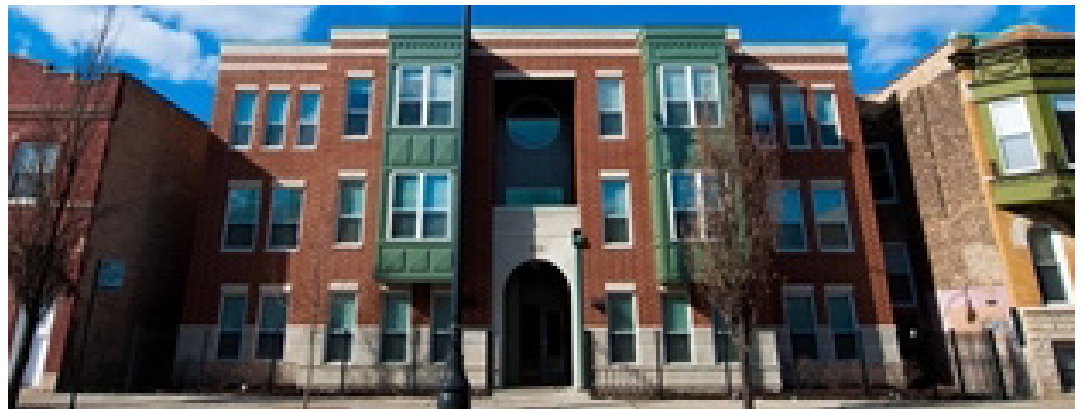
MAXIMUM INCOME GUIDELINES

Household Income Must Not Be More Than

1 Person	2 People	3 People	4 People	5 People	6 People
\$51,060	\$58,320	\$ 65,640	\$72,900	\$78,780	\$84,600

FEATURES

- Secure Intercom Entry System
- High efficiency furnaces & air conditioning
- Secure bicycle storage
- Wiring for Cable and High-Speed Internet
- Common laundry facilities in each building
- Off-street parking
- Smoke free





ZAPATA APARTMENTS

Información de Renta



*Para más información
visite www.bickerdike.org o
escanee el código QR.
También puede llamar a
Bickerdike Apartments
al 773.227.6332
Lunes- Martes, Jueves - Viernes
9:00 a.m. - 5:00 p.m.*

Zapata Apartments consta de 61 apartamentos residenciales en cuatro edificios en o cerca del corredor de la Armitage, en la comunidad de Logan Square. Los apartamentos tienen de uno a tres dormitorios.

Zapata Apartments es un desarrollo ecológico, respetuoso con el medio ambiente y energéticamente eficiente, con electrodomésticos con certificación Energy Star y otros elementos ecológicos.

NIVELES DE RENTA

1 Dormitorio	\$1,035
2 Dormitorios	\$1,255
3 Dormitorios	\$1,450

INGRESO ANUAL MINIMO

\$31,050
\$37,650
\$43,500

LOCALIZACIONES

- 1955 N. St Louis
- 3230 W. Armitage
- 3503 W. Armitage
- 3734 W. Cortland

SE ACEPTAN COMPROBANTES DE SECCIÓN 8

INGRESO ANUAL MAXIMO

Ingreso Anual Familiar No Debe Ser Mas de:

1 Person	2 People	3 People	4 People	5 People	6 People
\$51,060	\$58,320	\$65,640	\$72,900	\$78,780	\$84,600

CARACTERÍSTICAS

- Sistema de entrada con intercomunicador seguro
- Hornos y aire acondicionado de alta eficiencia
- Aparcamiento seguro para bicicletas
- Cableado para cable e Internet de alta velocidad
- Instalaciones de lavandería en cada edificio.
- Estacionamiento fuera de la calle

